



CASE STUDY

Verizon Data Centers CARTERET, NJ



TECHNOLOGY

DATA CENTERS

OPERATING COMPANY:

Forest Electric ~Δ

CLIENT:

Turner Construction Co.

PROJECT DURATION:

December 2008–September 2010

CONTRACT AMOUNT:

\$14 million

VALUE DELIVERED

Forest NJ was contracted by Turner Construction to provide electrical services for the expansion of an existing data center. The first phase of the project was begun in December 2008 and was substantially complete at the end of August 2009. The second phase of the project began in December 2009 and was substantially complete at the end of September 2010.

CLIENT OBJECTIVES

The client wanted to expand capacity of their existing data center facility. Construction had to be scheduled so as to minimize impact to the existing facility and adjacent tenants. An extremely aggressive construction schedule was required to meet the critical project turnover date required by the client.

SCOPE OF SERVICES

Phase I of the Verizon Data Center project consisted of the addition of 113,000 s.f. to an existing data center. The installation consists of a separate 29KV service and distribution equipment, three 750KVA Stationary UPS Systems, three 2.5 MVA rotary UPS systems, 480V Switchboards and distribution equipment as well as power to redundant building mechanical equipment and general lighting and power requirements. As the lead MEP design coordinator, Forest responsible for the layout and coordination of all major mechanical and electrical system components. The installation and expansion of the building fire alarm, security, BMS, EPO and power monitoring systems was also provided.

TECHNICAL SOLUTIONS

Relationships

Quality Service

VALUE ENGINEERING

Experience

Project Schedule & Coordination

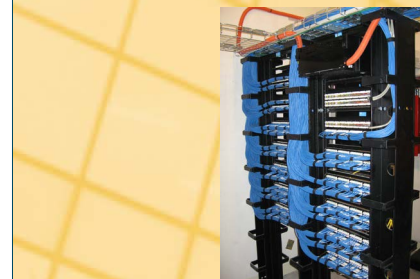
EXPERTISE

- ☐ New Construction
- ☐ Retrofit
- ☒ Electrical Construction
- ☐ Mechanical Construction
- ☐ Facilities Services
- ☐ Consulting Services

Verizon Data Center CARTERET, NJ

SOLUTIONS

Forest was able to utilize their extensive background in Data Center construction to assist Turner in the design, installation and commissioning of the Carteret Facility. Forest assumed the lead BIM coordination responsibility for the project. Their on site BIM designers were instrumental in providing accurate coordinated drawings in a timely fashion, thereby minimizing construction delays due to coordination and information lead times. Forest worked directly with Turner Construction to develop and implement the construction schedule that was critical to the success of the project.



This document contains confidential and proprietary information and is intended solely for the internal business use of EMCOR Group, Inc. and its subsidiaries ("EMCOR"). The download, reproduction, or use of this document (in whole or in part) by anyone other than an EMCOR employee is not permitted and the distribution or display of this document (in whole or in part) to anyone other than an EMCOR employee is not permitted without the prior written consent of the Marketing and Communications Department of EMCOR Group, Inc. This document should be returned to EMCOR immediately upon request.

Copyright 2012, EMCOR Group, Inc., All Rights Reserved